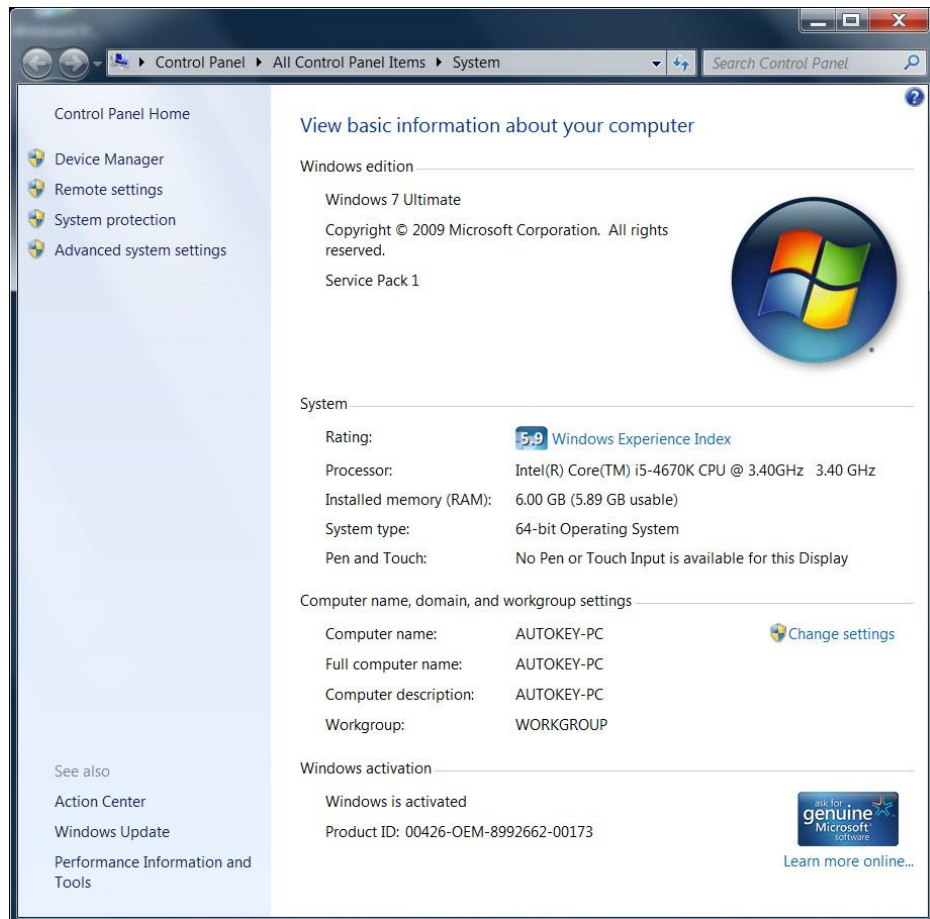
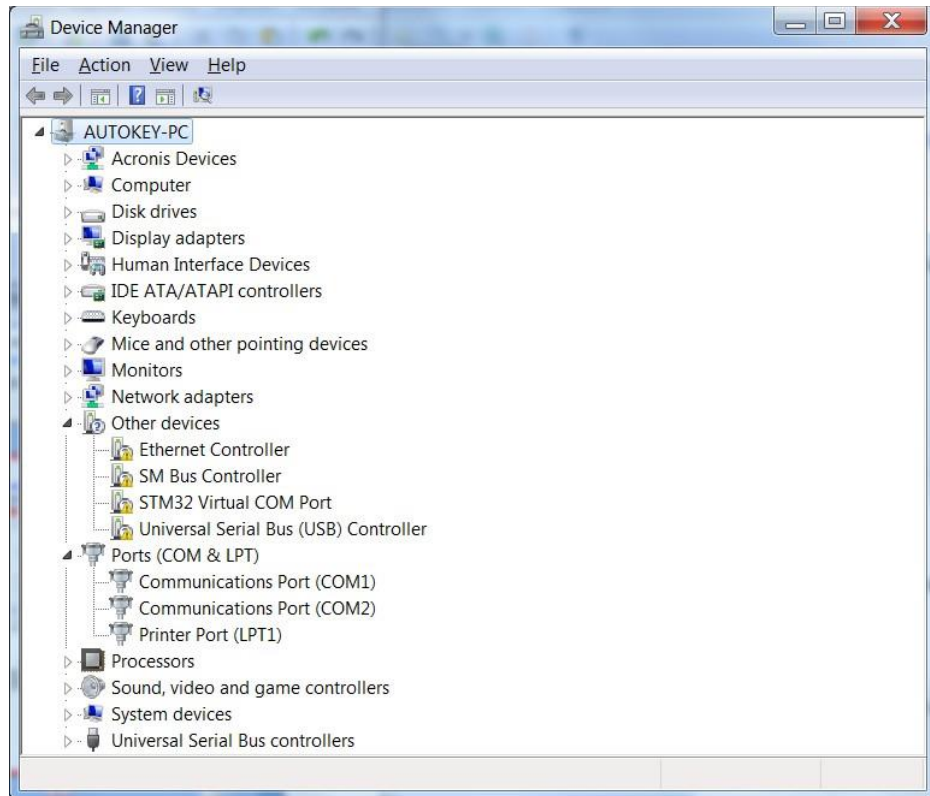


DRIWERS INSTALLATION

1. Connect programmer to usb port your computer.
LED mist be flash.
2. Open your windows device manager and check device status.





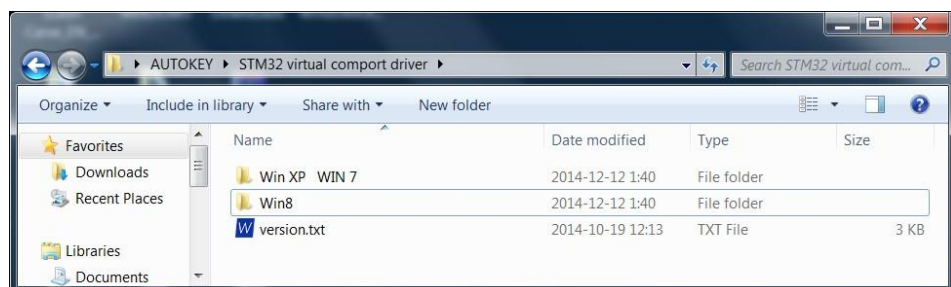
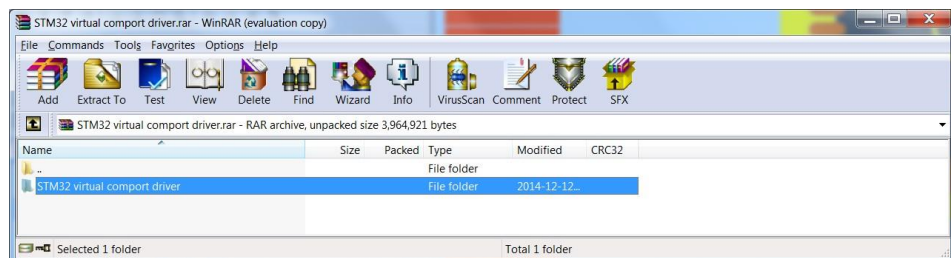
For now device STATUS = NO STM32 VIRTUAL COM PORT

If You don't have have STM drivers then please download :

Link for drivers:

https://1drv.ms/u/s!AkPFIqWCtacbgni_kuZEPBckG_fv

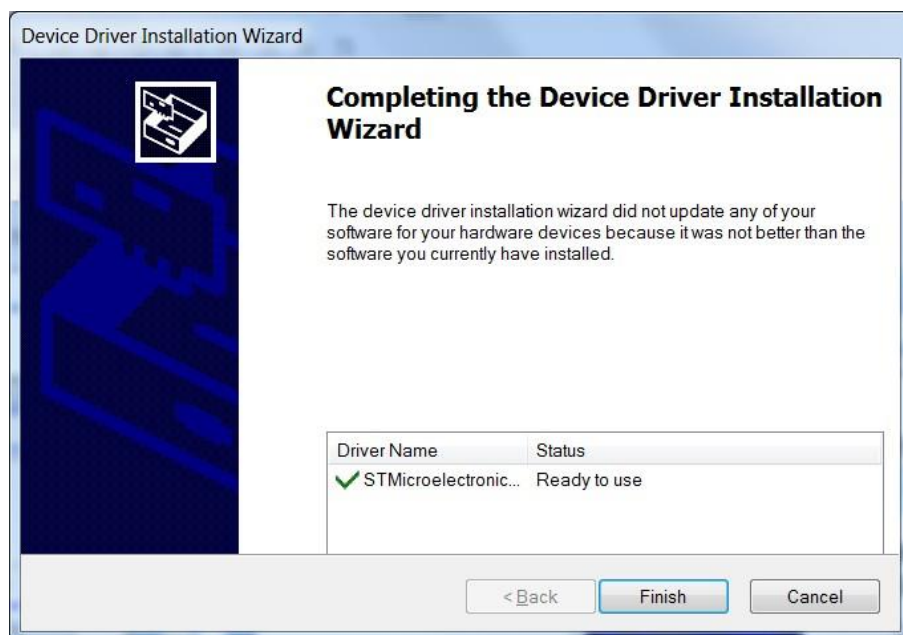
after download open rar and extract drivers
password = autokey



DRIVERS FOR WIN 8 = DRIVERS FOR WIN 10

I USE WINDOWS 7 64-bit = dpinst_amd64.exe
for WINDOWS 7 32-bit = dpinst_x86.exe

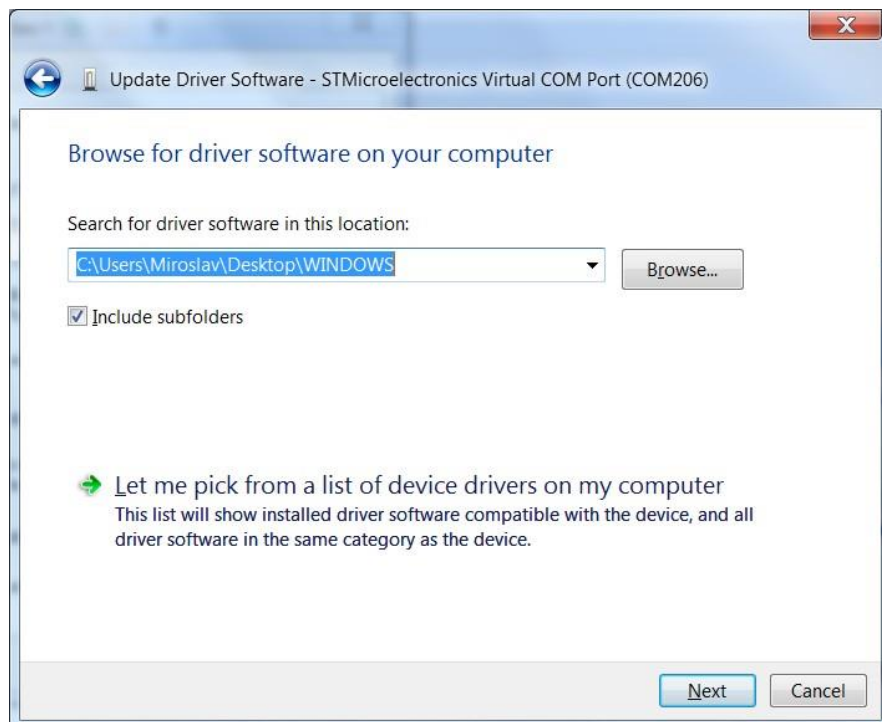
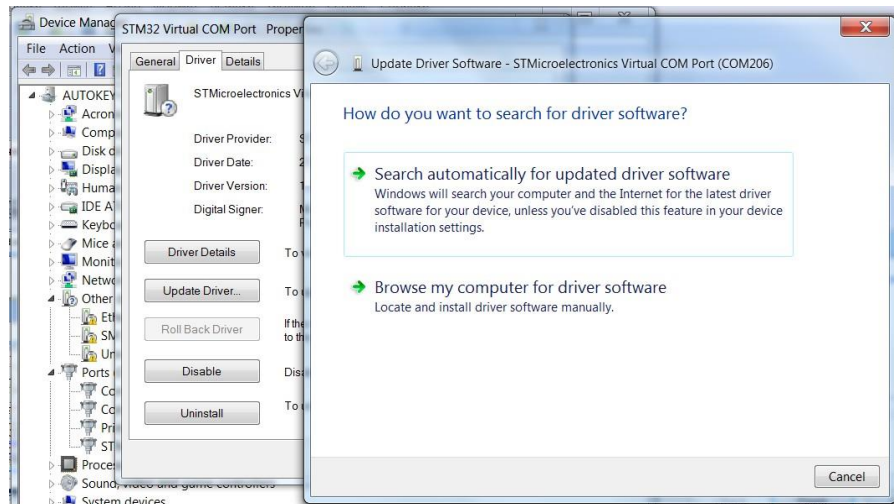
you need to run necessary .exe file



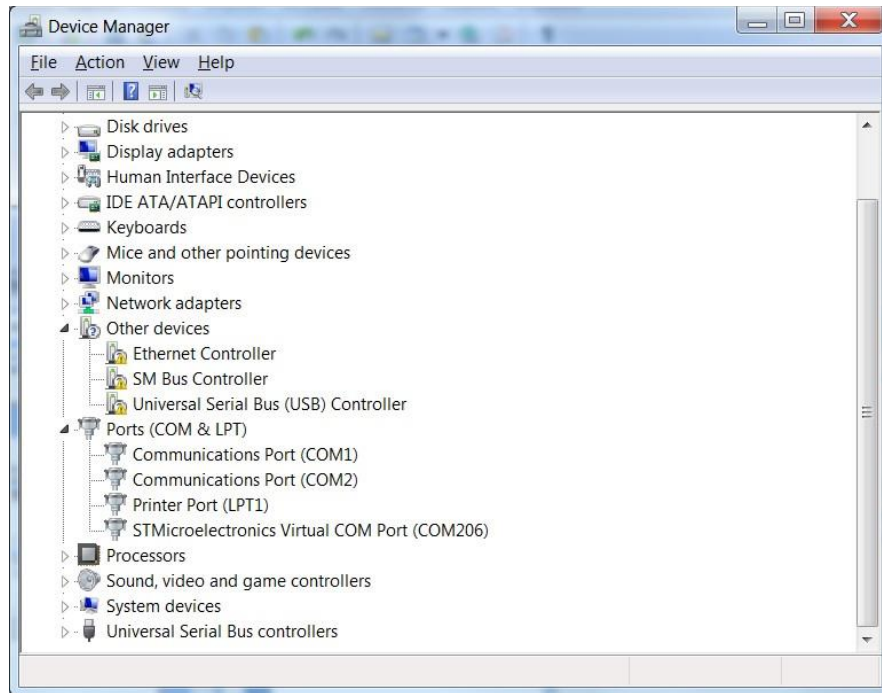
next step = update drivers for your device

click right mouse button on your device in device manager
and select

Update Driver - Browse my computer for driver software



after this procedure you can see necessary STM32 comport number.



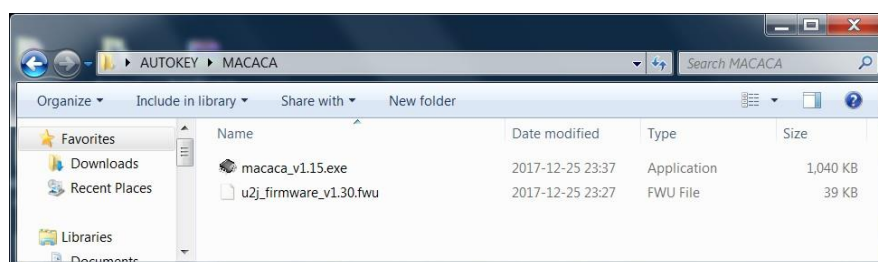
MAC/MPC SOFTWARE INSTALLATION.

3. SOFTWARE DOWNLOADING (software 1.15 firmware 1.30)

link:

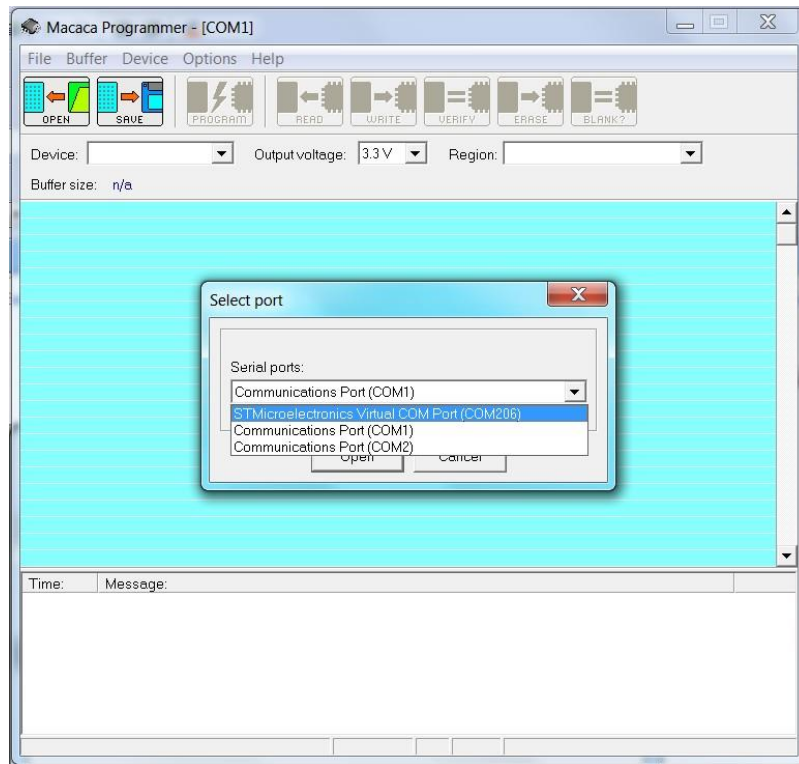
<https://1drv.ms/u/s!AkPFIqWCtacbgw-XqXr3ZZy6LKik>

password = autokey

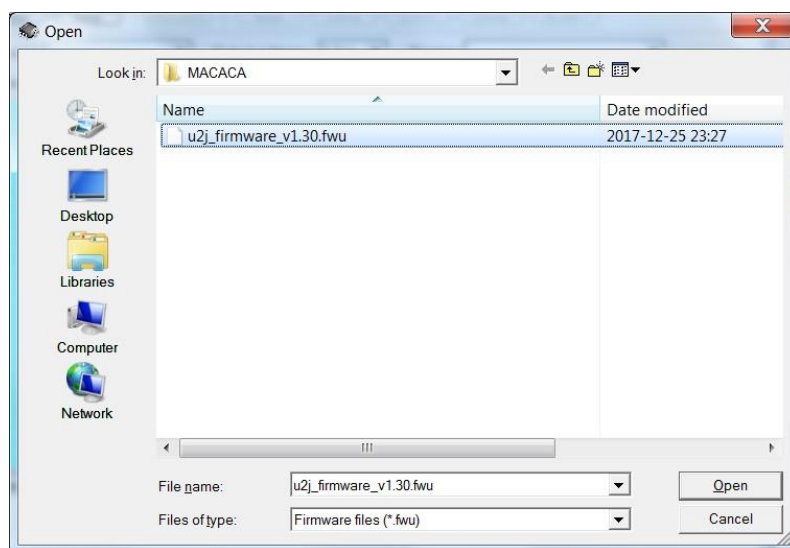


Please connect programmer to USB
programmer must blink led after connection to usb
you need to run macaca_v1.15.exe and select necessary
COM port.

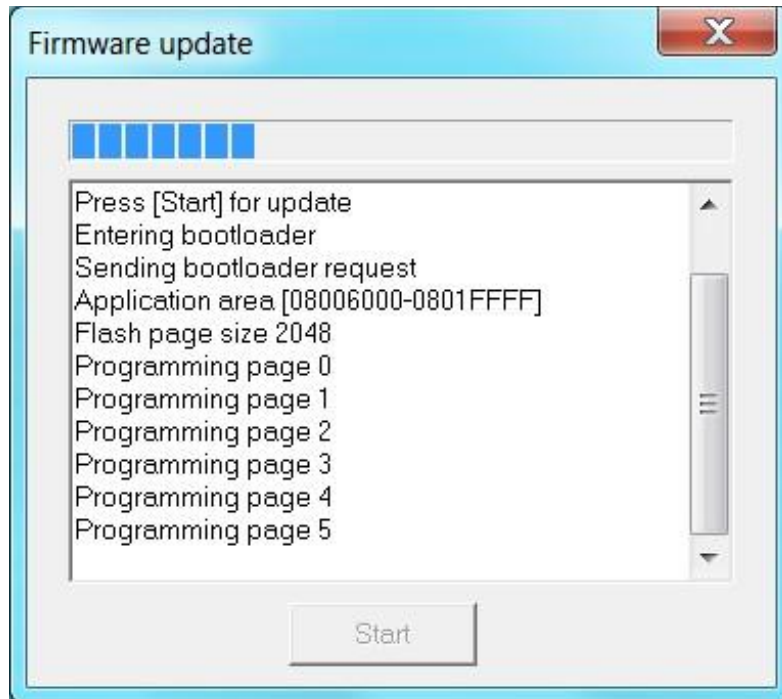
click OPTION - PORT and select necessary STM VIRTUAL
COM PORT



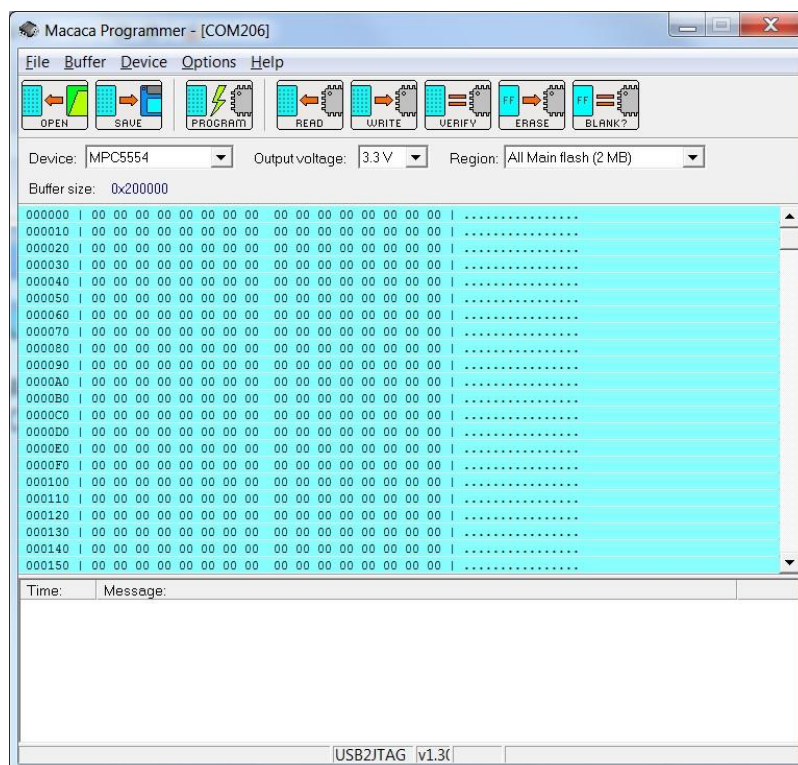
If you need to install new firmware then :
 click OPTION - FIRMWARE UPDATE and select
 necessary file



and press START



And after this one more time press : OPTION - PORT - and select necessary STM32 VIRTUAL COMPORT and press OPEN.



now programmer is fully updated and after usb reconnection will ready for work.



I CHECK ALL PROGRAMMER BEFORE POSTING ON
REAL ECU !!!!!!!!!!!!!

